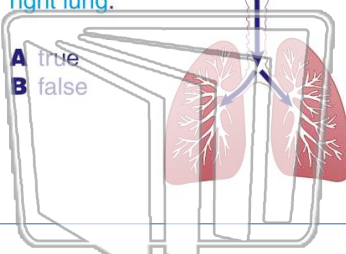




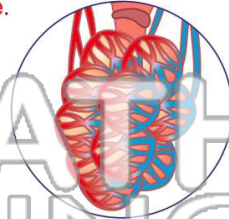
Name \_\_\_\_\_ Class \_\_\_\_\_ Date \_\_\_\_\_

1 The **left bronchus** leads into the **left lung** and the **right bronchus** leads into the **right lung**.



- A true
- B false

2 The **alveoli** specialize in **gas exchange**.



- A true
- B false

3 Where are the **alveoli** located?



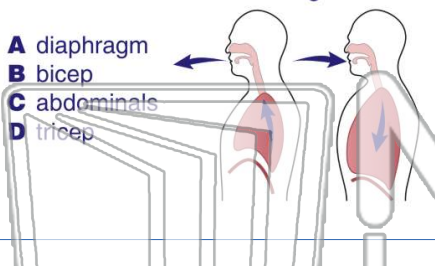
4 Which part of the blood **exchanges** carbon dioxide for oxygen?



## PREVIEW

Please [Sign In](#) or [Sign Up](#) to download the printable version of this worksheet

7

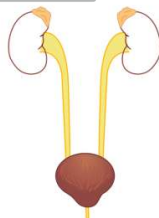


- A diaphragm
- B bicep
- C abdominals
- D tricep

- A pharynx
- B larynx
- C lung
- D trachea

9 What body system **removes wastes** from the body?

- A respiratory
- B circulatory
- C digestive
- D excretory



10 Why is it important to **get rid of wastes** created by the body?

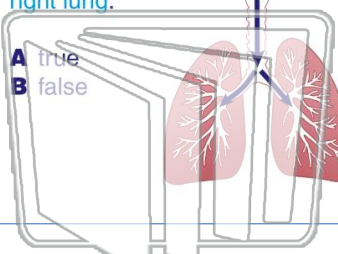
- A to make room for more blood
- B to prevent sickness
- C to waste our white blood cells
- D to increase blood flow





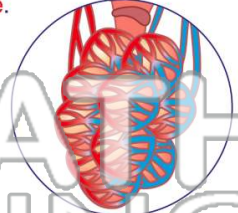
Name \_\_\_\_\_ Class \_\_\_\_\_ Date \_\_\_\_\_

1 The **left bronchus** leads into the **left lung** and the **right bronchus** leads into the **right lung**.



- A true
- B false

2 The **alveoli** specialize in **gas exchange**.



- A true
- B false

3 Where are the **alveoli** located?



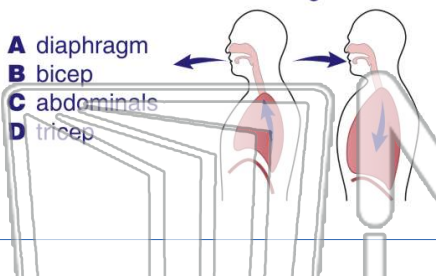
4 Which part of the blood **exchanges** carbon dioxide for oxygen?



**PREVIEW**

Please [Sign In](#) or [Sign Up](#) to download the printable version of this worksheet

7

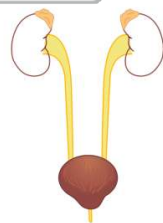


- A diaphragm
- B bicep
- C abdominals
- D tricep



- A pharynx
- B larynx
- C lung
- D trachea

9 What body system **removes wastes** from the body?



- A respiratory
- B circulatory
- C digestive
- D excretory

10 Why is it important to **get rid of wastes** created by the body?

- A to make room for more blood
- B to prevent sickness
- C to waste our white blood cells
- D to increase blood flow