



Name _____ Class _____ Date _____

1 The **Wilderness Road** was a trail westward built in **1775** by _____ and his men.

Circle the answer letter.

- a. Daniel Boone
- b. William Clark
- c. Jim Bowie



6 **Pioneers** in hilly areas **cut homes** into the **sides of hills**. These homes were called _____.

- a. dugouts
- b. sod houses
- c. ranch houses

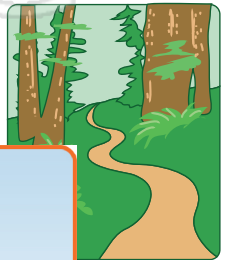


2 Wagons were used by pioneer families to carry their belongings westward. Name the **2,000-mile long road** they used that ended in **Oregon**.



7 **Roads** built by companies that **charged a fee** for using the roads were known as _____.

- a. expressways



3 c
li



was
cle it.



PREVIEW

Please [Sign In](#) or [Sign Up](#) to download the printable version of this worksheet

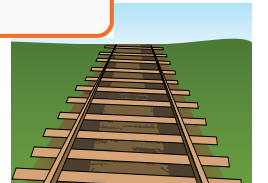
ern parts
meet?

4 T
M
C

- a. Oregon Trail
- b. Mormon Trail
- c. Santa Fe Trail



- a. Fort Henry, Ohio
- b. Atlanta, Georgia
- c. Denver, Colorado

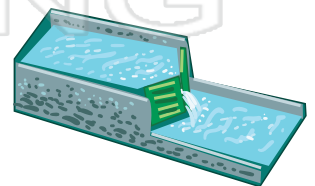


5 A **waterway** built by humans is called a canal. Name the **canal** that opened in **1825** in **New York State**.



10 A **device** used in a **canal** to move boats up and down levels, sometimes called a **water elevator**, is known as a _____.

- a. key
- b. lock
- c. bridge





Name _____ Class _____ Date _____

1 The **Wilderness Road** was a trail westward built in **1775** by _____ and his men.

Circle the answer letter.

- a. Daniel Boone
- b. William Clark
- c. Jim Bowie



6 **Pioneers** in hilly areas **cut homes** into the **sides of hills**. These homes were called _____.

- a. dugouts
- b. sod houses
- c. ranch houses

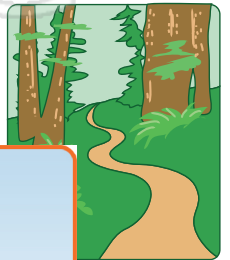


2 Wagons were used by pioneer families to carry their belongings westward. Name the **2,000-mile long road** they used that ended in **Oregon**.



7 **Roads** built by companies that **charged a fee** for using the roads were known as _____.

- a. expressways



3 _____ was _____ cle it.



PREVIEW

Please [Sign In](#) or [Sign Up](#) to download the printable version of this worksheet

4 T _____ M _____ C _____ ern parts _____ meet?

- a. Oregon Trail
- b. Mormon Trail
- c. Santa Fe Trail



- a. Fort Henry, Ohio
- b. Atlanta, Georgia
- c. Denver, Colorado



5 A **waterway** built by humans is called a canal. Name the **canal** that opened in **1825** in **New York State**.

Erie Canal



10 A **device** used in a **canal** to move boats up and down levels, sometimes called a **water elevator**, is known as a _____.

- a. key
- b. lock
- c. bridge

