



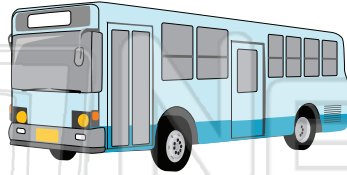
Types of Governments

SS
F

Name _____ Class _____ Date _____

1 All governments provide which of the following? Circle the answer letter.

- a. public transportation
- b. structure
- c. health care



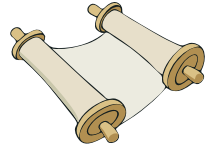
2 A republic is a form of government where _____.

- a. religion controls the people
- b. a dictator takes over from the people



6 In a constitutional monarchy, power lies in the _____.

- a. King
- b. Parliament
- c. House of Representatives



7 The United States government shares power with the states. What is this called?

- a. federalism
- b. liberalism



3



government



PREVIEW

4

Please [Sign In](#) or [Sign Up](#) to download the printable version of this worksheet

makes
entire

- b. a government controlled by religion
- c. absolute rule by one leader

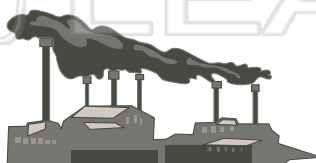


- a. city government
- b. state government
- c. federal government



5 In a socialist government, the _____ controls businesses for the people.

- a. government
- b. working class
- c. labor union



10 In an absolute monarchy, the role of the king or queen is usually _____.

- a. elected
- b. inherited
- c. chosen by representatives





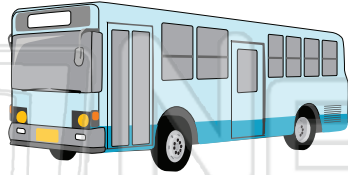
Types of Governments - Answer Key

SS
F

Name _____ Class _____ Date _____

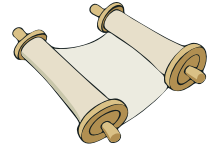
1 All governments provide which of the following? Circle the answer letter.

- a. public transportation
- b. structure
- c. health care



6 In a constitutional monarchy, power lies in the _____.

- a. King
- b. Parliament
- c. House of Representatives



2 A republic is a form of government where _____.

- a. religion controls the people
- b. a dictator takes over from the people



7 The United States government shares power with the states. What is this called?

- a. federalism
- b. liberalism



3



government



PREVIEW

4

Please [Sign In](#) or [Sign Up](#) to download the printable version of this worksheet

makes entire

- b. a government controlled by religion
- c. absolute rule by one leader

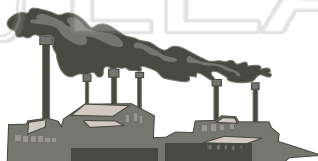


- a. city government
- b. state government
- c. federal government



5 In a socialist government, the _____ controls businesses for the people.

- a. government
- b. working class
- c. labor union



10 In an absolute monarchy, the role of the king or queen is usually _____.

- a. elected
- b. inherited
- c. chosen by representatives

