



The Erie Canal



Name _____ Class _____ Date _____

1 Which **two bodies of water** does the Erie Canal **connect**?

- A the Atlantic Ocean with the Great Lakes
- B the Pacific Ocean with Lake Erie
- C the Hudson River with the Mohawk River
- D the Susquehanna River with Lake Michigan



2 Most of the men who **designed** the construction of the **Erie Canal** were experienced **engineers**.

True or false?



3 To **overcome the rise in land** between the **beginning** and the **end** of the Erie Canal, _____ were built.

4 The original Erie Canal was _____ **miles long**.



PREVIEW

Please [Sign In](#) or [Sign Up](#) to download the printable version of this worksheet

7 _____ of the construction of the canal?

- A Rochester
- B Detroit
- C Philadelphia
- D Baltimore



_____ **begin**?

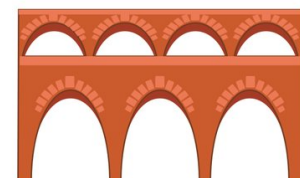
- A 1699
- B 1798
- C 1825
- D 1901

9 What was the **name** given to **people who worked** on the Erie Canal?

- A tributaries
- B canal folks
- C Erie Diggers
- D canawlers

10 How **deep** was the **original canal**?

- A 4 feet
- B 10 feet
- C 100 feet
- D 1 mile





The Erie Canal

SS
G

Name _____ Class _____ Date _____

1

Which **two bodies of water** does the Erie Canal **connect**?

- A the Atlantic Ocean with the Great Lakes
- B the Pacific Ocean with Lake Erie
- C the Hudson River with the Mohawk River
- D the Susquehanna River with Lake Michigan



2

Most of the men who **designed** the construction of the **Erie Canal** were experienced **engineers**.

True or false?



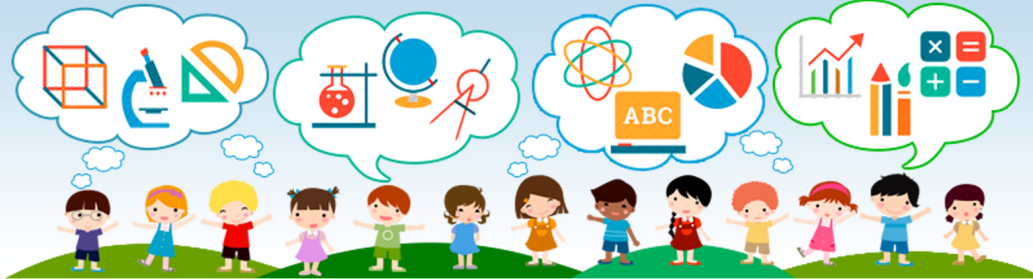
3

To **overcome the rise in land** between the **beginning** and the **end** of the Erie Canal, _____ were built.

4

The original Erie Canal was _____ **miles long**.

5



PREVIEW

Please [Sign In](#) or [Sign Up](#) to download the printable version of this worksheet

7

_____ of the construction of the canal?

- A Rochester
- B Detroit
- C Philadelphia
- D Baltimore



_____ **begin**?

- A 1699
- B 1798
- C 1825
- D 1901

9

What was the **name** given to **people who worked** on the Erie Canal?

- A tributaries
- B canal folks
- C Erie Diggers
- D canawlers

10

How **deep** was the **original canal**?

- A 4 feet
- B 10 feet
- C 100 feet
- D 1 mile

